



# Elma Ultrasonic Cleaners

The Elmasonic Easy series includes 9 units of different sizes and is characterized by simple, user-friendly operation.

- \* Permanently integrated Sweep-function with 100 % ultrasonic power at a frequency of 37 kHz
- \* Activatable Pulse-function is suited to remove tenacious, mineral soiling and polishing pastes. The ultrasonic power is increased up to 20 %, so that any soiling will be removed easily and quickly.
- \* Limit temperature with visual warning when bath temperature reaches the set limit temperature
- \* preventing the coagulation of proteins and protecting sensitive items from damage due to high temperatures.
- \* Protection against splashwater with higher unit feet
- \* Equipped with heating from Easy 30 H upwards
- \* Equipped with drain duct on the rear from the Easy 60 H upwards



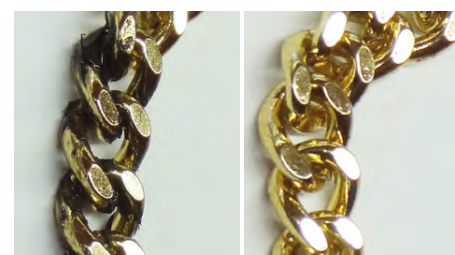
	Easy 10 H	Easy 20 H	Easy 30 H	Easy 40 H	Easy 60 H	Easy 100 H	Easy 120 H	Easy 180 H	Easy 300 H
Ultrasonic Frequency (Hz)	37	37	37	37	37	37	37	37	37
Tank Capacity Max. (l)	0.8	1.75	2.75	4.52	5.75	9.5	12.75	18.0	28.0
Tank Labour Capacity (l)	0.7	1.2	1.9	3.2	4.3	7.5	11.3	12.9	20.6
Ultrasonic Power Effective (W)	30	35	80	140	150	150	200	200	300
Heating Power (W)	60	120	200	200	400	400	800	800	1200
Unit External Dim. WxDxH (mm)	206x120x186	176x176x219	264x176x219	263x176x269	341x196x269	339x281x272	342x285x322	371x347x322	544x347x322
Tank Internal Dim. WxDxH (mm)	190x85x59	137x123x99	255x124x99	240x118x149	281x132x149	281x222x149	276x216x199	303x273x199	477x274x199
Basket Internal Dim. WxDxH (mm)	177x73x30	112x103x50	198x106x50	190x105x75	255x115x75	255x200x75	250x190x115	280x250x115	455x250x115
Weight (kg)	2.0	2.1	3.3	4.0	5.1	5.9	7.5	8.5	11.0



Explore more  
<https://www.harshad.com/elma>



Elmasonic EASY for cleaning jewellery and watch parts



Removal of polishing pastes



# Elma Steam Jet



Elmasteam 8 Basic

The compact Elmasteam 8 basic with 8 bar steam pressure is the ideal steam cleaning machine for smooth and environmentally friendly pre- and final cleaning tasks.



Elmasteam 8 Med

The Elmasteam 8 med steam jet cleaner is the ideal tool to pre-clean burrs, drills and electro-surgical instruments, instruments and smoothly removes even tenacious contaminations



Elmasteam 4.5 basic HP    Elmasteam 4.5 basic

In the field of watches and jewellery, Elmasteam 4.5 basic is suited to clean worn and mounted jewellery as well as watch straps, jewellery chains and rings - also with set stones. With 4.5 bar steam pressure even sensitive parts are safely and effectively cleaned.

Specifications	Elmasteam 4.5 Basic / Elmasteam 4.5 Basic HP	Elmasteam 8 Basic	Elmasteam 8 Med
Max operating pressure	4.5 bar	8.0 bar	8.0 bar
Pressure tank capacity	4.0 l	5.0 l	5.0 l
Max. tank capacity	3.3 l	3.8 l	3.8 l
Power supply	220 - 240 V / 115 - 220 V 50 - 60 Hz	220 - 240 V 50 - 60 Hz	220 - 240 V 50 - 60 Hz
Power consumption	2800 W (220-240 V) 1650 W (115-220 V)	3120 W	3120 W
Steam temperature (Tank)	max. 155 °C	max. 185 °C	max. 185 °C
Steam temperature (Nozzle)	max. 135 °C	max. 160 °C	max. 160 °C
Dimensions (W x D x H)	250 x 320 x 420 mm	260 x 355 x 520 mm	315 x 350 x 520 mm
Weight	6.75 kg	20 kg	20 kg



# Logimec Ultrasonic & Steam Cleaner



Model	Tank Capacity	Tank Dimension	External Dimension	Heating Power	Ultrasonic Max	Ultrasonic Frequency	Voltage
170H	1.7 l	150x135x100	175x160x260	150 W	140 W	26 kHz	230 V
270HD	2.75 l	240x137x100	315x175x255	250 W	150 W	26 kHz	230 V
430HD	5 l	240x137x170	315x175x330	250 W	300 W	26 kHz	230 V
570HD	6.5 l	300x150x170	375x190x330	500 W	300 W	26 kHz	230 V
950HD	10.5 l	300x240x170	375x280x335	500 W	550 W	26 kHz	230 V
1600HD	16 l	375x175x240	525x295x420	1500 W	800 W	38 kHz	230 V
25LT HD	25 l	350x250x300	550x450x870	1500 W	950 W	26 kHz	230 V
50LT HD	50 l	500x250x400	700x450x920	3000 W	1200 W	26 kHz	230 V
80LT HD	80 l	650x250x500	810x490x950	4500 W	1500 W	26 kHz	400 V Trifase +Neutro
90LT HD	92 l	540x400x430	690x550x900	4500 W	1500 W	26 kHz	400 V Trifase +Neutro
100LT HD	100 l	670x300x500	810x490x950	6000 W	1800 W	26 kHz	400 V Trifase +Neutro
200LT HD	200 l	700x500x550	840x750x1000	6000 W	2800 W	26 kHz	400 V Trifase +Neutro

## Steam Jets



E 5003



E 5004



Explore more  
<https://www.harshad.com/logimec>

# Eitan Steam Cleaners

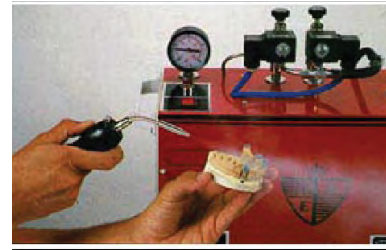


## LSE-6

A simple and effective solution for your jewellery cleaning problems.

### Applications

- \* Metal treatment for facing with various materials including the Light Cure method
- \* Porcelain surface cleaning between firing steps.
- \* Cleaning and rising in all processing stages.
- \* Eliminates other cleaning procedures such as ultrasonic or detergents .



Specifications	LSE-6
Capacity	6 litres
Warm up time	15 - 20 mins
Voltage	110 V and 220 V
Dimensions (L x W x H)	550 x 220 x 420 mm
Net weight	20 kg

## LSE-20/2-A

Powerful steam cleaner for the large jewellery manufacturers. Fast and effective cleaning tool for the high volume, around the clock production.

### Applications

- \* Metal treatment for facing with various materials including the Light Cure method
- \* Porcelain surface cleaning between firing steps.
- \* Cleaning and rising in all processing stages.
- \* Eliminates other cleaning procedures such as ultrasonic or detergents .

Specifications	LSE-20/2-A
Capacity	20 litres
Warm up time	15 mins
Voltage	110 V and 220 V
Dimensions (L x W x H)	600 x 610 x 770 mm
Net weight	65 kg

